



# OUTDOOR EVENTS





8'

6'



Outdoor throws have a wind rating of 3; see website for more information on wind ratings.



## OUTDOOR FITTED TABLE THROW

This heavy-duty throw can handle wind and spills, making it a perfect choice for outdoor events.

- Stays on the table, even in wind
- Covers four sides of the table
- Artwork is dye sublimated on 600 denier polyester
- Machine-washable
- Flame retardant certified for exhibit hall use

### Full-Color Full-Bleed

Item #	Description	1	2-5	6-11	12-24
107060	6' Outdoor Fitted Throw	419.50	365.00	344.00	314.50
107061	8' Outdoor Fitted Throw	470.50	428.00	409.25	385.75
White fabric fully dye sublimated with full-color artwork.				USD MSRP (C)	

Description	Table Size	Full-Bleed Graphic Size	Product Wt.
6'	72"W x 29"H x 29.75"D	view online template	3.2 lbs.
8'	96"W x 29"H x 29.75"D	view online template	4.2 lbs.

Production Lead Time: 3 days from final proof approval



## OUTDOOR TREK LITE RETRACTOR

This retractor's large removable feet keep it stable in the wind, making it perfect for temporary outdoor use.

- Shock cord pole for easy assembly
- Artwork is printed on Titan™ 13 oz. scrim vinyl
- Kit includes two single-sided banners
- Banners used outdoors have a 90-day warranty; banners used indoors have a 1-year warranty

### Outdoor Trek Lite Retractor

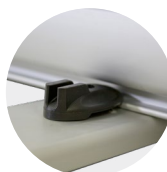
Item #	Description	1	2-5	6-11	12-24
263040	Kit	550.00	534.50	493.25	477.75
Kit Includes: Hardware, 2 Installed Graphics, 4 Stakes and Soft Carry Case				USD MSRP (C)	

Product Size	Finished Graphic Size	Product Wt.	Media
35.75"W x 82.25"H x 32.25"D	33.25"W x 77.25"H	22.75 lbs.	Titan™ 13 oz. scrim vinyl

Production Lead Time: 2 days from final proof approval



Includes four stakes to secure feet to the ground.



Removable feet attach securely to the base for a stable footprint.



Heavy-duty base with black ends.

Prices are subject to change; visit [showdowndisplays.com](http://showdowndisplays.com) for the most current pricing.  
Setup fee: \$20.00(G); no setup fee on orders placed via our website. View current graphic templates, assembly videos and instructions on our website.

SHOWDOWNDISPLAYS.COM



## PLAZA RETRACTOR

Elevate your outdoor message with this compact, weather-resistant display.

- Artwork is printed on Titan™ 13 oz. scrim vinyl
- Integrated 3-piece ballast; each ballast holds 11 lbs. of sand or 0.8 gallons of water
- Three-section shock cord pole for easy assembly
- Banners used outdoors have a 90-day warranty; banners used indoors have a 1-year warranty

### Plaza Retractor

Item #	Description	1	2-5	6-11	12-24
261500	Kit	390.00	366.50	351.00	327.50
Kit Includes: Hardware, Installed Graphic and Soft Carry Case				USD MSRP (C)	

Product Size	Finished Graphic Size	Product Wt.	Media
36.25"W x 81.625"H x 14.25"D	33.25"W x 80.24"H	10.8 lbs.	Titan™ 13 oz. scrim vinyl

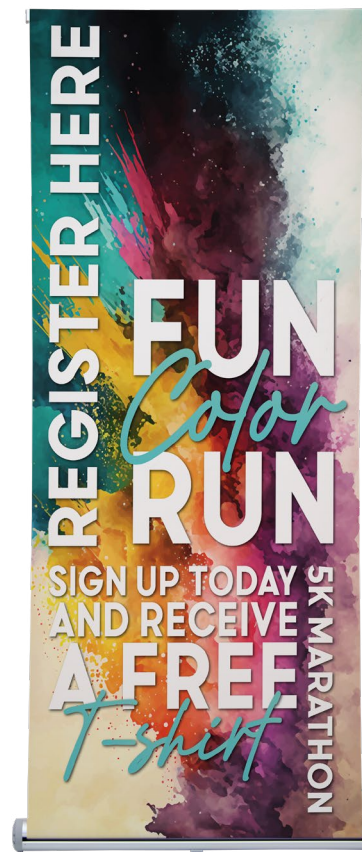
Production Lead Time: 2 days from final proof approval



Lightweight, low-profile silver base.



Removable ballasts can be filled with water or sand to keep display stable outdoors.



front view



back view

The 3-piece ballast base provides stability with a small footprint.

## HEADLINER BANNER DISPLAY

This enormous banner display is great for use in parking lots or at outdoor events.

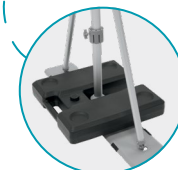
- Banner available in backlit woven polyester or Titan™ 18 oz. opaque scrim vinyl
- Includes four heavy-duty black stakes
- Adjustable frame hardware is compatible with custom banner heights and widths (call for quote; restrictions may apply)
- Banners used outdoors have a 90-day warranty; banners used indoors have a 1-year warranty

### Headliner Banner Display

Item #	Description	1	2-5	6-11	12-24
263400	Backlit Woven Polyester Single-Sided Kit	1590.00	1526.00	1478.00	1399.00
263401	18 oz. Opaque Scrim Vinyl Single-Sided Kit	1590.00	1526.00	1478.00	1399.00
263402	18 oz. Opaque Scrim Vinyl Double-Sided Kit	1716.00	1647.00	1596.00	1510.00
Kit Includes: Hardware, Graphic, 4 Stakes and Soft Carry Case with Wheels				USD MSRP (C)	

Description	Product Size	Finished Graphic Size	Product Wt. (Polyester / Vinyl)
headliner	129.75"W x 85.25"H x 39.5"D	119"W x 76.5"H	56 lbs. / 60 lbs.
face cutout	129.75"W x 85.25"H x 39.5"D	view online template	NA / 60 lbs.

Production Lead Time: 2 days for 18 oz. opaque scrim vinyl / 4 days for backlit woven polyester from final proof approval



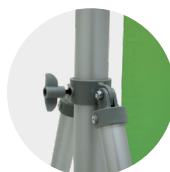
Add the Square Plastic Ballast (item #263298, sold separately) for additional stability. See website.



C-clips attach to clear grommets along the side of the banner to keep it secure.



Banner rail slides into notches in the frame's hubs.

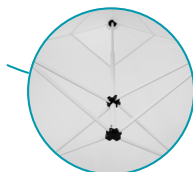


Thumbscrews on the frame make it easy to set up and adjust.



Heavy-duty steel foot features a handle so it's easy to position during setup.





Spring-loaded center pole sets up quickly without a center pole crank.



Easy-Glide Tent Feet allow the tent frame to slide on dirt and grass, preventing the legs from catching. US Patent #D760857



Legs feature plastic release buttons for easy height adjustments.

## 10' ECONOMY TENT

Ideal for short-term use, the Economy tent is where affordability and functionality meet.

- 1.1875"W square legs constructed of 0.9 mm white finish powder-coated steel
- ABS nylon joints
- Spring-loaded center pole allows for quick and easy peak setup
- 10' tents are compatible with Deluxe half wall kits
- Canopy is available in full-bleed dye sublimation featuring three-piece construction with separate pieces for the peak, valance and main body
- Economy Plus includes soft carry case with wheels
- Frame has a 6-month warranty

### Economy Tent

Item #	Description	1	2-5	6-11	12-24
241239	Dye Sublimation Kit	809.00	805.00	801.00	797.00
Soft Carry Case Not Included		USD MSRP (C)			

**Product Size**  
117.5"W x 128.75"-136.5"H x 117.5"D

**Product Wt.**  
51 lbs.

### Economy Plus Tent

Item #	Description	1	2-5	6-11	12-24
241240	Dye Sublimation Kit	911.00	906.50	902.00	897.50
		USD MSRP (C)			

**Product Size**  
117.5"W x 128.75"-136.5"H x 117.5"D

**Product Wt.**  
56.8 lbs.

Production Lead Time: 7 days from final proof approval



10' tent with dye sublimation, shown with dye sublimated double-sided full wall (full wall sold separately; see website)



Easy-Glide Tent Feet allow the tent frame to slide on dirt and grass, preventing the legs from catching. US Patent #D760857



Legs feature plastic push buttons for pinch-free height adjustments.

## 10' STANDARD TENT

This popular tent strikes a perfect balance between cost effectiveness and portability.

- 1.125"W square legs constructed of 1 mm pebble powder-coated steel
- ABS nylon joints
- Crank-up canopy creates a taut, clean peak
- Canopy available in eight stock colors (see website), with full-bleed dye sublimation or with full-bleed UV printing
- Frame has a lifetime warranty

### 10' Standard Tent

Item #	Description	1	2-5	6-11	12-24
240611	Full-Color Imprint Kit (1 Location)	634.00	621.50	608.50	589.50
240612	Full-Color Imprint Kit (2 Locations)	716.00	701.50	687.50	666.00
240614	Full-Color Imprint Kit (4 Locations)	857.50	840.50	823.00	797.50
240619	Dye Sublimation Kit	1272.00	1247.00	1221.00	1183.00
241420	UV-Printed Kit	1526.00	1496.00	1465.00	1420.00
		USD MSRP (C)			

**Product Size**  
118.5"W x 127.5"-140"H x 118.5"D

**Imprint Graphic Size**  
peak: 44"W x 24"H  
valance: 60"W x 8"H

**Full-Bleed Graphic Size**  
view online template

**Product Wt.**  
51.5 lbs.

Production Lead Time: 4 days for full-color imprint / 7 days for dye sublimation from final proof approval / 10 days for UV printing

## 10' OMNI TENT

This tent is designed for portability. It features an innovative central hub design that makes it a snap to set up.

- 1.25" diameter octagon legs constructed of 0.8 mm anodized aluminum
- Canopy is constructed of durable, weather-resistant 600 denier polyester
- Hybrid construction with aluminum legs and steel truss
- The included soft case slides over the frame when it's fully collapsed
- The tent can be secured to the ground with the included stake kit
- Canopy available in eight stock colors (see website), with full-bleed dye sublimation or with full-bleed UV printing
- Frame has a lifetime warranty

### 10' Omni Tent

Item #	Description	1	2-5	6-11	12-24
241271	Full-Color Imprint Kit (1 Location)	940.00	921.00	902.50	874.00
241272	Full-Color Imprint Kit (2 Locations)	1025.00	1005.00	984.00	953.50
241274	Full-Color Imprint Kit (4 Locations)	1210.00	1186.00	1162.00	1125.00
241279	Dye Sublimation Kit	1400.00	1372.00	1344.00	1302.00
241425	UV-Printed Kit	1680.00	1646.00	1613.00	1562.00

USD MSRP (C)

Product Size	Imprint Graphic Size	Full-Bleed Graphic Size	Product Wt.
119.5"W x 115.25"-126.875"H x 119.5"D	peak: 44"W x 24"H valance: 60"W x 8"H	view online template	52.5 lbs.

Production Lead Time: 4 days for full-color imprint / 7 days for dye sublimation from final proof approval / 10 days for UV printing



Tent wheels make moving a breeze whether it's in use or being transported to your event.



Easy-Glide Tent Feet allow the tent frame to slide on dirt and grass, preventing the legs from catching. US Patent #D760857



Legs feature levers for easy height adjustments.



Central hub makes setup fast and easy.

## 10' PREMIUM TENT

This Premium tent features a strong aluminum frame with sturdy hexagon-shaped legs.

- 1.75" diameter hexagon-shaped legs constructed of 0.8 mm anodized aluminum
- ABS glass-filled nylon joints
- Crank-up canopy creates a taut, clean peak
- Canopy available in eight stock colors (see website), with full-bleed dye sublimation or with full-bleed UV printing
- Frame has a lifetime warranty

### 10' Premium Tent

Item #	Description	1	2-5	6-11	12-24
240631	Full-Color Imprint Kit (1 Location)	909.00	891.00	872.50	845.50
240632	Full-Color Imprint Kit (2 Locations)	972.00	952.50	933.00	904.00
240634	Full-Color Imprint Kit (4 Locations)	1060.00	1039.00	1018.00	986.00
240639	Dye Sublimation Kit	1474.00	1445.00	1415.00	1371.00
241422	UV-Printed Kit	1769.00	1733.00	1698.00	1645.00

USD MSRP (C)

Product Size	Imprint Graphic Size	Full-Bleed Graphic Size	Product Wt.
118"W x 126.75"-139.25"H x 118"D	peak: 44"W x 24"H valance: 60"W x 8"H	view online template	52 lbs.

Production Lead Time: 4 days for full-color imprint / 7 days for dye sublimation from final proof approval / 10 days for UV printing



10' tent shown in lemon with full-color imprint (2 locations)



Easy-Glide Tent Feet allow the tent frame to slide on dirt and grass, preventing the legs from catching. US Patent #D760857



Legs feature levers for easy height adjustments.



Prices are subject to change; visit [showdowndisplays.com](http://showdowndisplays.com) for the most current pricing.  
Setup fee: \$20.00(G); no setup fee on orders placed via our website. View current graphic templates, assembly videos and instructions on our website.

SHOWDOWNDISPLAYS.COM

# SIGNICADE® AND SIGNICADE® DELUXE A-FRAMES

With different sizes to choose from, these A-frames fit a variety of spaces.

- Maintenance-free and weather-resistant
- Folds flat for transport or storage



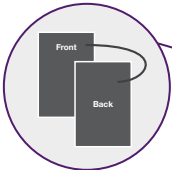
## Signicade A-Frame

Item #	Description	1	2-5	6-11	12-24
210133	Kit	218.70	212.10	202.20	197.30
Kit Includes: Orange, Yellow or White Hardware, 2 Single-Sided Graphics, 2 Strips of Hook and 2 Strips of Loop					

Product Size	Finished Graphic Size	Product Wt.	Media
24.5"W x 42"H x 31"D	24"W x 36"H	20 lbs.	4 mm corrugated plastic

Frame Colors Orange Yellow White

Production Lead Time: 2 days from final proof approval



Double-sided signboards have your artwork printed on both sides, making each signboard reversible.



## Signicade Deluxe A-Frame

Item #	Description	1	2-5	6-11	12-24
210121	Single-Sided Kit	240.40	232.90	222.10	216.50
210122	Double-Sided Kit	257.25	249.70	237.80	232.20
Kit Includes: Black or White Hardware and 2 Single- or Double-Sided Graphics					

Product Size	Finished Graphic Size	Product Wt.	Media
27"W x 38.5"H x 19"D	24"W x 36"H	21 lbs.	4 mm corrugated plastic

Frame Colors Black White

Production Lead Time: 2 days from final proof approval

## Features & Benefits



Plastic base won't rust, making it great for outdoor use.



Convenient molded handle makes it easy to move.



Frames can be filled with water or sand for stability.



Signboards are easy to swap out to accommodate frequent message changes.



CORRUGATED PLASTIC SIGN

Great for use on lawns, this sign gives you a simple, inexpensive way to get your message noticed.

- Constructed of 4 mm corrugated plastic
- Full-color artwork can be printed on one or both sides
- Custom sizes and shapes available (call for quote; restrictions may apply)
- Corrugated plastic can be recycled after use

Corrugated Plastic Sign

Item #	Description	1	2-5	6-11	12-24
271110	36"W x 24"H Single-Sided	27.57	26.74	25.92	25.09
271111	36"W x 24"H Double-Sided	36.21	35.12	34.04	32.95
271113	24"W x 18"H Single-Sided	18.28	17.73	17.18	16.63
271114	24"W x 18"H Double-Sided	23.89	23.17	22.46	21.74
USD MSRP (C)					

Production Lead Time: 2 days from final proof approval

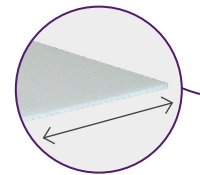
STANDARD STEP STAKE

• Installation is quick and easy

Standard Step Stake

Item #	Description	1-10	11-20	21-30	31+
381501	Standard Step Stake	2.83	2.77	2.69	2.63
USD MSRP (C)					

Hardware Lead Time: Ships same day when ordered before 2 p.m. Central



Stakes (sold separately) slide into fluted openings along the width of the signboard.

OUTDOOR FLEX SIGN

This spring-mounted sign is built to withstand the elements.

- Each poster is protected behind a sheet of clear, non-glare acrylic
- Graphics are printed single-sided; two graphics included in kit
- Ballast base holds 4.5 gallons of water; weighs 63 lbs. when filled
- Tool-free assembly

Outdoor Flex Sign

Item #	Description	1	2-5	6-11	12-24
210127	Flex Sign Kit	457.75	444.00	425.75	412.00
263006	Flex Sign with Ballast Base Kit	502.00	487.25	467.00	452.00
Kit Includes: Hardware, 2 Protective Acrylic Sheets and 2 Single-Sided Graphics					
USD MSRP (C)					

Description	Product Size	Finished Graphic Size	Product Wt.	Media
sign	25.5"W x 44"H x 29"D	23.4375"W x 33.125"H	27 lbs.	Titan™ 10 oz. scrim vinyl
sign w/ ballast base	31"W x 46"H x 20"D	23.4375"W x 33.125"H	26 lbs.	Titan™ 10 oz. scrim vinyl

Production Lead Time: 2 days from final proof approval



Flex Sign

Flex Sign with Ballast Base



Edges flip open for easy poster changes.



Spring-mounted base allows sign to gently flex in the wind.



Wheels on the ballast base make it easy to move.



Ballast base can be filled with water or sand for stability.



4' x 8' banner with grommets

Scrim texture will be subtly visible on the backside of the banner.

**MORE  
OPTIONS**  
AVAILABLE  
ONLINE

## 18 OZ. OPAQUE SCRIM VINYL BANNER

This banner is reinforced with scrim, making it extremely durable for outdoor use.

- Multiple finishing styles available (see website)
- Banners used outdoors have a 90-day warranty; banners used indoors have a 1-year warranty

### 18 oz. Opaque Scrim Vinyl Banner (Double-Sided)

Item #	Description	Product Wt.	1-2	3-7	8-22	23-49
304470	2' x 4'	1 lb.	86.60	81.40	75.70	71.10
Item #	Description	Product Wt.	1	2-3	4-9	10-22
304472	3' x 6'	2.5 lbs.	194.90	183.20	170.40	160.00
Item #	Description	Product Wt.	1	2-5	6-12	13-24
304474	4' x 8'	4 lbs.	325.25	302.50	284.25	262.75

USD MSRP (C)

Production Lead Time: 2 days from final proof approval



3' x 5'

**BUILD  
YOUR OWN  
FLAG**  
CUSTOM  
SIZES, FINISHING  
& QUOTES

## NYLON FLAG

Lightweight and fade-resistant, our nylon flags come in a variety of shapes and sizes and are perfect for indoor and outdoor use.

- Constructed of 200 denier nylon
- Standard finishing includes canvas header and brass grommets
- Four rows of lock-stitching provide extra reinforcement on the fly end of rectangular flags
- Single- and double-sided options available
- Custom sizes and finishing available (visit website or call for quote; restrictions may apply)
- Flags used outdoors have a 90-day warranty; flags used indoors have a 1-year warranty

### Rectangle Nylon Flag

Item #	Description	Product Wt.	1	2-5	6-11	12-24
304535	3' x 5' Single-Sided Flag	0.5 lb.	101.70	81.35	76.30	66.10
304555	3' x 5' Double-Sided Flag	1.5 lbs.	203.30	162.60	152.50	132.20
304536	4' x 6' Single-Sided Flag	0.7 lb.	139.80	111.80	104.80	90.85
304556	4' x 6' Double-Sided Flag	2.1 lbs.	279.75	223.80	209.80	181.90
304537	5' x 8' Single-Sided Flag	1 lb.	203.30	162.60	152.50	132.20
304557	5' x 8' Double-Sided Flag	3 lbs.	406.75	325.50	305.00	264.50

USD MSRP (C)

Production Lead Time: 4 days from final proof approval



#### Single-Sided

Single-sided flags are printed on one side; reverse image shows through the back.



#### Double-Sided

Double-sided flags have the image printed correctly on both sides with a block-out polyester liner.



3' x 5'

**BUILD  
YOUR OWN  
FLAG**  
CUSTOM  
SIZES, FINISHING  
& QUOTES

## FABRIC FLAG

Easy to hang, this flag works with any standard flagpole.

- Best for outdoor use
- Single- and double-sided options available
- Artwork is dye sublimated on super poly knit fabric for single-sided flags and on block-out polyester for double-sided flags
- Custom sizes and finishing available (visit website or call for quote; restrictions may apply)
- Flags used outdoors have a 90-day warranty; flags used indoors have a 1-year warranty

### Rectangle Fabric Flag

Item #	Description	Product Wt.	1	2-5	6-11	12-24
300007	3' x 5' Single-Sided Flag	0.5 lb.	101.70	81.35	76.30	66.10
300019	3' x 5' Double-Sided Flag	1 lb.	203.30	162.60	152.50	132.20
300011	4' x 6' Single-Sided Flag	1 lb.	139.80	111.80	104.80	90.85
300020	4' x 6' Double-Sided Flag	2 lbs.	279.75	223.80	209.80	181.90
300015	5' x 8' Single-Sided Flag	1.25 lbs.	203.30	162.60	152.50	132.20
300021	5' x 8' Double-Sided Flag	2.5 lbs.	406.75	325.50	305.00	264.50

USD MSRP (C)

Production Lead Time: 4 days from final proof approval



#### Single-Sided

Single-sided flags are printed on one side; reverse image shows through the back.



#### Double-Sided

Double-sided flags have the image printed correctly on both sides with a block-out polyester.



## SAIL SIGNS

Sail signs are built to move in the wind, making them truly hard to miss.

- Premium and Streamline have lifetime warranty on pole hardware; Value has a 90-day warranty on pole hardware
- Available single- or double-sided



### Value Teardrop Sail Sign

Description	Item #	Single-Sided Flag				Item #	Double-Sided Flag			
		1	2-5	6-11	12-24		1	2-5	6-11	12-24
6.5' Kit with Cross Base and Water Ballast	191611	195.50	189.70	179.90	174.00	191613	276.75	268.50	254.75	246.40
9.5' Kit with Cross Base and Water Ballast	191619	221.70	215.10	204.00	197.30	191621	317.00	307.50	291.50	282.00
13' Kit with Cross Base and Water Ballast	191627	275.50	267.25	253.50	245.20	191629	412.50	400.25	379.50	367.25

Kit Includes: Hardware with Specified Base and Graphic (Does not include carry case)

USD MSRP (C)

### Value Razor Sail Sign

Description	Item #	Single-Sided Flag				Item #	Double-Sided Flag			
		1	2-5	6-11	12-24		1	2-5	6-11	12-24
7.5' Kit with Cross Base and Water Ballast	191651	195.50	189.70	179.90	174.00	191653	276.75	268.50	254.75	246.40
10.5' Kit with Cross Base and Water Ballast	191659	221.70	215.10	204.00	197.30	191661	317.00	307.50	291.50	282.00
15' Kit with Cross Base and Water Ballast	191667	275.50	267.25	253.50	245.20	191669	412.50	400.25	379.50	367.25

Kit Includes: Hardware with Specified Base and Graphic (Does not include carry case)

USD MSRP (C)

### Streamline Teardrop Sail Sign

Description	Item #	Single-Sided Flag				Item #	Double-Sided Flag			
		1	2-5	6-11	12-24		1	2-5	6-11	12-24
6' Kit with Three-Legged Base and Water Ballast	191401	267.00	259.00	245.70	237.70	191409	368.75	357.75	339.25	328.25
8' Kit with Scissor Base and Water Ballast	191403	337.75	327.50	310.75	300.50	191411	455.25	441.75	419.00	405.25
11.5' Kit with Scissor Base and Water Ballast	191405	398.00	386.00	366.00	354.25	191413	565.50	548.50	520.00	503.00
15' Kit with Scissor Base and Water Ballast	191407	470.25	456.25	432.75	418.50	191415	682.00	661.50	627.50	607.00

Kit Includes: Hardware with Specified Base, Graphic and Soft Carry Case

USD MSRP (C)

### Streamline Razor Sail Sign

Description	Item #	Single-Sided Flag				Item #	Double-Sided Flag			
		1	2-5	6-11	12-24		1	2-5	6-11	12-24
7' Kit with Three-Legged Base and Water Ballast	191429	267.00	259.00	245.70	237.70	191437	368.75	357.75	339.25	328.25
9' Kit with Scissor Base and Water Ballast	191431	337.75	327.50	310.75	300.50	191439	455.25	441.75	419.00	405.25
13' Kit with Scissor Base and Water Ballast	191433	398.00	386.00	366.00	354.25	191441	565.50	548.50	520.00	503.00
17' Kit with Scissor Base and Water Ballast	191435	470.25	456.25	432.75	418.50	191443	682.00	661.50	627.50	607.00

Kit Includes: Hardware with Specified Base, Graphic and Soft Carry Case

USD MSRP (C)

### Premium Teardrop Sail Sign

Description	Item #	Single-Sided Flag				Item #	Double-Sided Flag			
		1	2-5	6-11	12-24		1	2-5	6-11	12-24
6' Kit with Three-Legged Base and Water Ballast	190979	299.25	290.25	275.25	266.25	190978	434.25	421.25	399.50	386.50
8' Kit with Scissor Base and Water Ballast	190763	369.75	358.75	340.25	329.25	190762	519.50	504.00	478.00	462.50
11.5' Kit with Scissor Base and Water Ballast	190765	432.00	419.00	397.25	384.50	190764	633.50	614.50	582.50	563.50
15' Kit with Scissor Base and Water Ballast	190767	500.50	485.75	460.50	445.50	190766	746.00	723.50	686.50	664.00

Kit Includes: Hardware with Specified Base, Graphic and Soft Carry Case

USD MSRP (C)

### Premium Razor Sail Sign

Description	Item #	Single-Sided Flag				Item #	Double-Sided Flag			
		1	2-5	6-11	12-24		1	2-5	6-11	12-24
7' Kit with Three-Legged Base and Water Ballast	190985	299.25	290.25	275.25	266.25	190984	434.25	421.25	399.50	386.50
9' Kit with Scissor Base and Water Ballast	190757	369.75	358.75	340.25	329.25	190756	519.50	504.00	478.00	462.50
13' Kit with Scissor Base and Water Ballast	190759	432.00	419.00	397.25	384.50	190758	633.50	614.50	582.50	563.50
17' Kit with Scissor Base and Water Ballast	190761	500.50	485.75	460.50	445.50	190760	746.00	723.50	686.50	664.00

Kit Includes: Hardware with Specified Base, Graphic and Soft Carry Case

USD MSRP (C)

Production Lead Time: 4 days for Value and Premium / 2 days for Streamline from final proof approval



## SAIL SIGNS ACCESSORIES

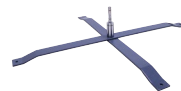
### Sail Sign Accessories

Item #	Description	Product Wt.	1	2-5	6-11	12-24
190706	Ground Spike	2 lbs.	54.25	52.60	49.91	48.28
190711	Heavy-Duty Cross Base	9 lbs.	95.65	92.80	88.00	85.15
190708	Round Water Ballast	0.5 lb.	54.75	53.10	50.35	48.73
190707	Scissor Base	7 lbs.	82.70	80.20	76.10	73.60
191591	Value Cross Base*	2.8 lbs.	35.79	34.72	32.93	31.85
220351	Value Sail Sign Soft Carry Case	0.8 lb.	21.61	21.18	20.53	20.10

\*Covered by a 90-day product warranty

USD MSRP (C)

Hardware Lead Time: Ships same day when ordered before 2 p.m. Central



**Item #190711**  
Heavy-duty cross base  
(indoor/outdoor)



**Item #190707**  
Scissor base  
(indoor/outdoor)



**Item #190706**  
Ground spike (outdoor)



**Item #220351**  
Value sail sign soft carry case



**Item #191591**  
Value cross base  
(indoor/outdoor)\*



**Item #190708**  
Round water ballast for  
6'-13' sail signs (indoor/outdoor)

Prices are subject to change; visit [showdowndisplays.com](http://showdowndisplays.com) for the most current pricing.  
Setup fee: \$20.00(G); no setup fee on orders placed via our website. View current graphic templates, assembly videos and instructions on our website.

SHOWDOWNDISPLAYS.COM

did you know

# WE SELL THESE PRODUCTS TOO?



Coast Guard



United States Flag



New Jersey



Burgess Club



Guidon Flags



Pennant Flags



Bag Toss



Parade Banner



EuroFit Flex Sign



Horizontal A-frame



Coro A-frame



Outdoor Ballast Display



Solid-Color Flutter Flag



Ascent Sail Sign

